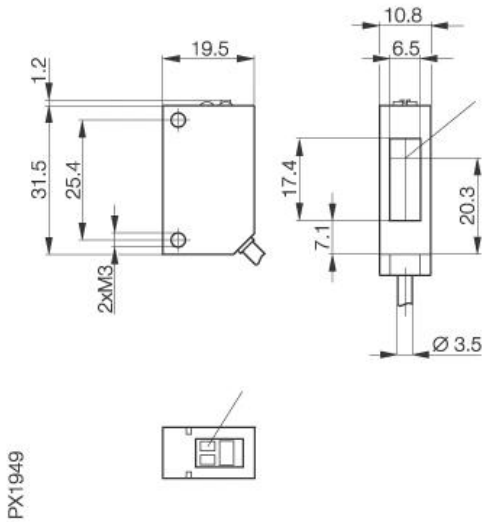


**Photoelectric Sensor**  
**BOS 5K-PS-IX10-02**  
**Sn=10000mm**  
**through-beam**



PX1949

**Common Data**

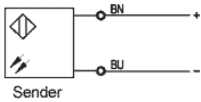
Series	5K
Sensortype	through-beam
Switching frequency	500 Hz
Rated operating distance Sn in mm	10000
asured operating distance Sa	adjustable
Indication Supply Voltage	yes, green LED
Indication Switching element on	yes, yellow LED (Rec.)
Indication Special funktion	yes, green LED (Rec.)
Ambient temperature	-25...+55°C
On-delay	1ms
Off-delay	<0,5ms
Light	Infrared, 880nm
Sensitivity Adjustment	Poti 270°
Permissible ambient light	5000 Lux
Output function	dark-on

**Mechanical Data**

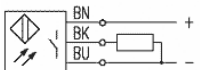
Measurements	31,5 x 19,5 x 10,8
Housing material	PC/PBT
Material of sensing face	PC
Degree of protection	IP67
Connection	Cable
Weigth	30g
Type of Cable	PVC

**Electrical Data**

Current	DC
Switching function	normally-open
Output	PNP
Rated operational voltage Ue	24V DC
Rated operational current Ie	100mA
Supply Voltage	10...30V DC
Frequency of Supply Voltage	DC
No-load supply current	< 15/< 20mA
Voltage drop	<1,2V
Short protection	yes
Protected against polarity reversal	yes



Sender



Empfänger



Utilization categories  
 Insulation class

Datasheet number:

Definitions see general catalog.  
 If not otherwise noted, ratings according to  
 IEC 60947-5-2 (DIN EN60947-5-2)

Balluff GmbH  
 Schurwaldstrasse 9  
 73765 Neuhausen a.d.F.  
 Phone (07158) 173-0 Fax (07158) 5010

Datenblatt by CD-ROM - 04/2007

